

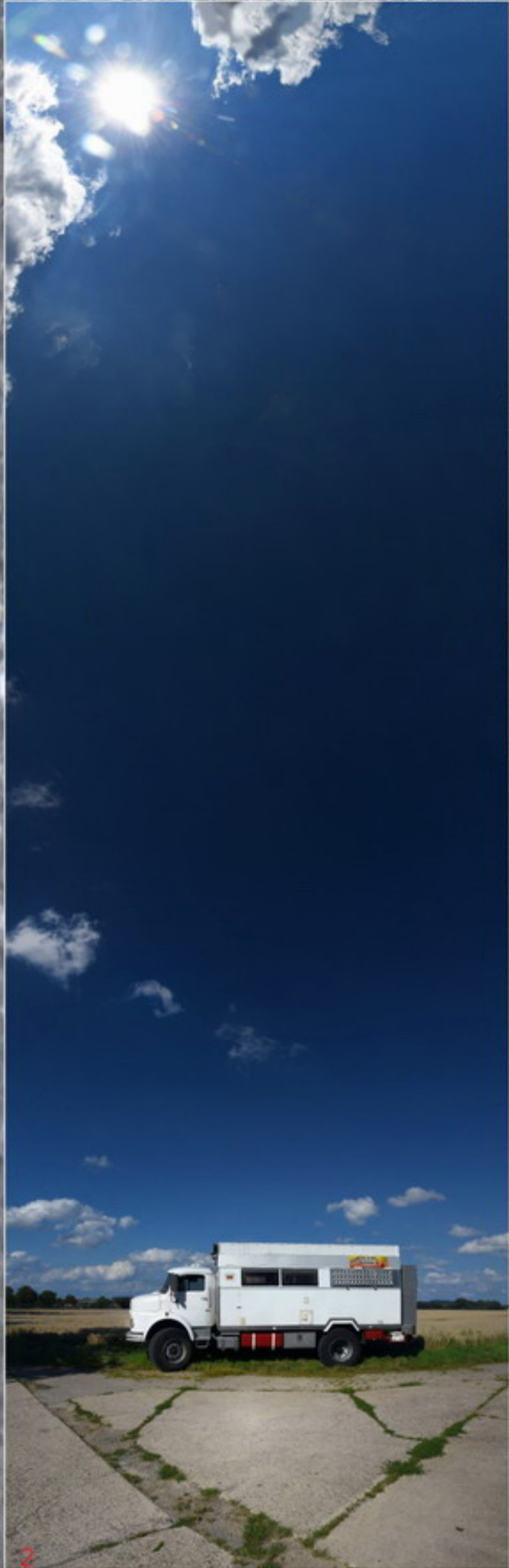
NAVITON

special coatings - powered by Nortech GmbH



*Nortech protecting systems -
Redefining the limits*

Perfection is a matter of technology!



To reach a perfect coating

You want exceptional results? Do you expect individual, sophisticated solutions? You want a partner who thinks ahead, who does not present problems, but offers solutions? Who is realizing holistic concepts? Then we fit together.

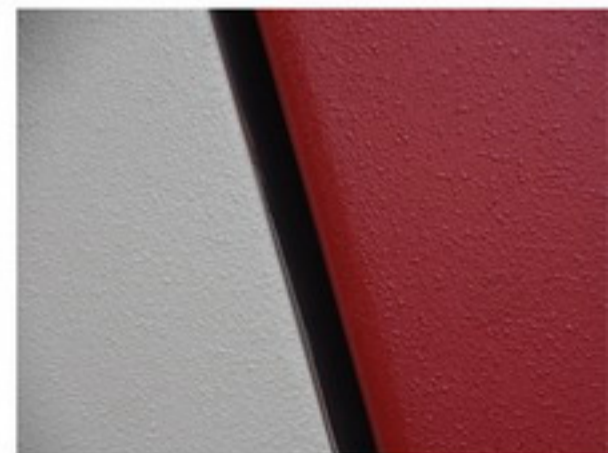
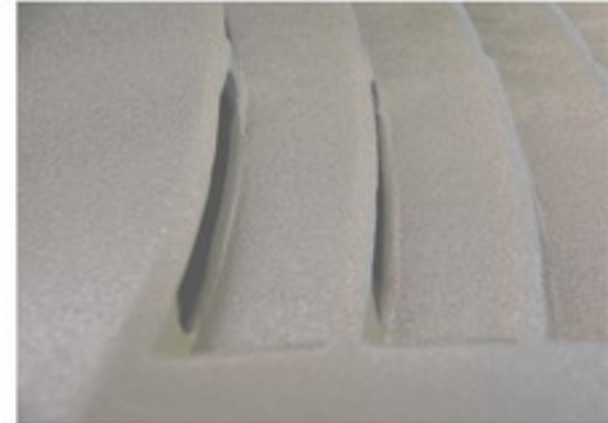
Quality right from the beginning.

Experience creates space - also for innovative ideas and unusual solutions. Our company brings more than 25 years of experience in the production of first-class coatings.

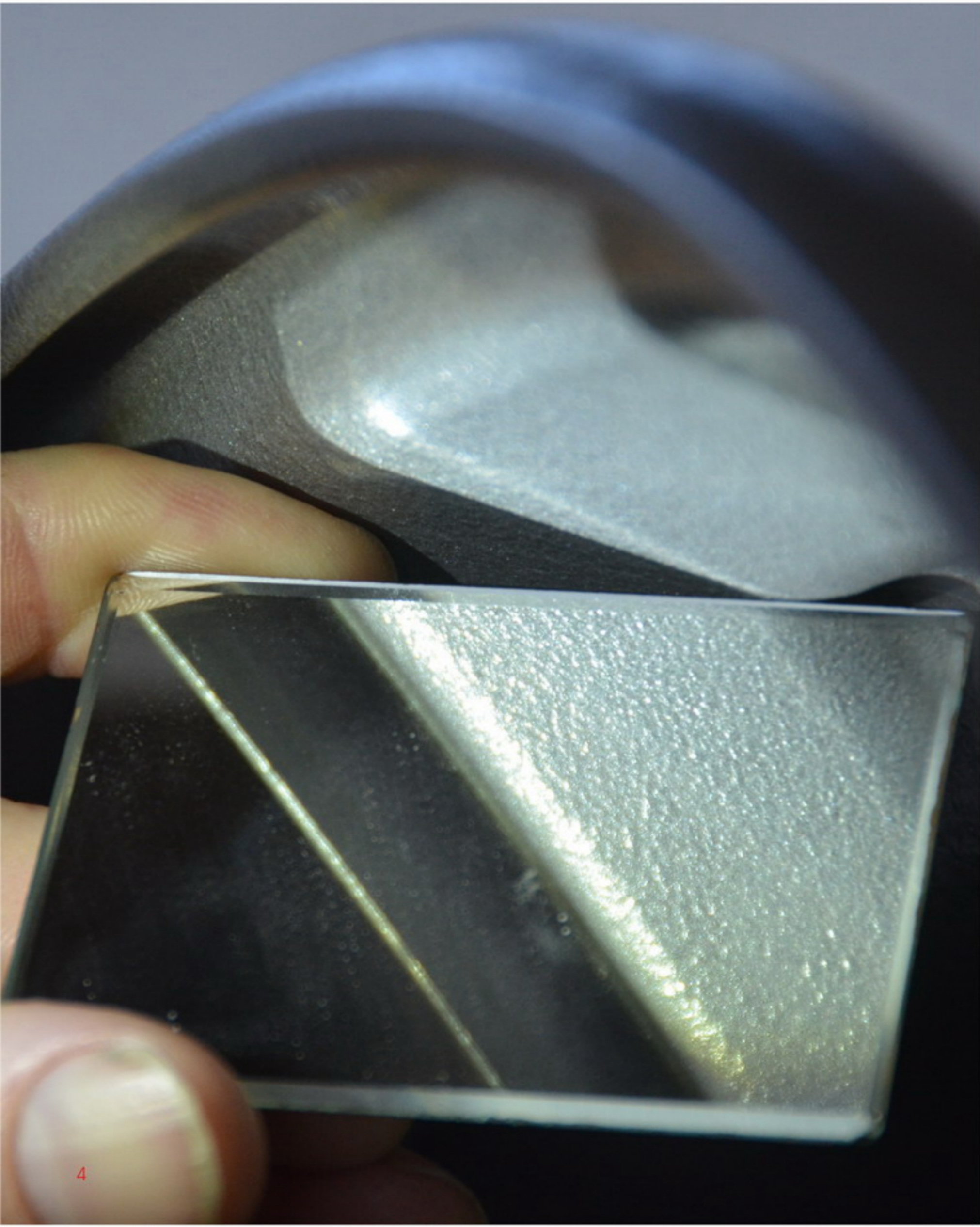
Together with our customers, we realize challenging projects in function, protection and refining technology of emergency vehicles, 4x4 and expedition vehicles as well as special applications in ship and offshore installations.

For the professional implementation, we have developed sophisticated logistics and a very well functioning project management.

We translate your ideas into creative solutions. Through the perfect interaction between development, production and application technology, we can help you realize your project flexibly and on schedule.



Reliability is our success.



You can expect more!

Naviton coating

offers in addition to the high mechanical protection value "impact-resistant coating" thanks to its special additive composition surface properties which allows a very good cleaning.

The multi-component coating is best suited for indoor and outdoor use after curing. The selection of suitable primers offers a secure adhesion on almost every substrate (metal, wood, composite materials, even rubber and many plastics). Permanent external water load is no problem.

The Naviton coating system allows continuous project use with coordinated components. The system can be adapted exactly to your application and the materials you are working with.

Whether you're looking for a new construction or a project to be renovated - Naviton allows an extraordinary result!

The advantages at a glance:

Excellent corrosion protection

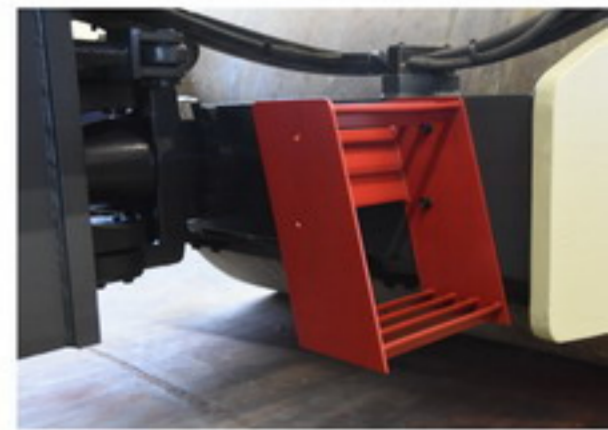
The two-component adhesion agent of the system penetrates even the finest capillary and closes it reliably. Body reprocessing will get a reliable basis for coming layers which will lock into the ground. Natural substrates such as wood get a long-lasting protection with the Naviton system.

Excellent UV protection

Naviton has a very high protection against ultraviolet radiation. Even as Naviton Pure (colorless), it takes a good protection for the underlying layers and thus prevents premature aging. This also works in interaction with aggressive media such as salt water.

Excellent durability

Naviton has a high impact strength due to sophisticated polymer compounds. Especially in the construction vehicle or off-road sector, the user gets a proper safety margin. The appearance and thus also the value of the vehicle remains longer.



Good prospects for your project.



We bring color to life!

Excellent cleanability

After complete curing, Naviton develops an effective dirt-repellent surface. Where a long time scrubbing had been done, a minimal effort is now enough. The surface - coated with Naviton - becomes in addition less dirty.

Excellent workability

Depending on the setting, Naviton can be easily applied with a brush, roller or spraying unit. As a rule, a clean hall is sufficient. Fine dust particles will be integrated by Naviton.

Large color chart

Naviton can be delivered in all colors according to RAL-Classic (further color charts on request) and colorless (Naviton Pure). Quantities according to color chart on request.

Surfaces

Naviton can be coated smoothly as standard and will harden in a satin finish. Optionally, Naviton can also be executed with structured Caliper technology. This surface is extremely durable, dirt-resistant and features an unique look.

Versatility

Naviton is also able to cover interdisciplinary tasks. Naviton Flex, a modified variant is available which offers a flexible consistency. This coating is impact-absorbing and remains tough-elastic. Together with the properties of very good adhesion on various substrates and the high internal cohesion, high-strength and flexible bonding can be realized at the same time. These also harden thanks to the Naviton formulation also under air conclusion.

The use of a state-of-the-art 3-K technology makes it even possible to adapt the viscosity of the material on site. From thin liquid to pasty / moldable consistency, everything is possible. As a rule, Naviton Flex is black, but can also be delivered in individual colors.

Safeness

Naviton is long-term tested in intensive test series and has proved itself in practice very well.



Corrosion protection and adhesion agent



Corrosion protection and adhesion agent

Naviton primers and adhesion agents make the ideal combination of various prevailing substrates with the top coat.

The Naviton adhesion agent is the first choice wherever perfect corrosion protection is required.

Its consistency allows safe penetration and sealing of potentially endangered areas.

For use, e.g. of anti-churlge mats must be treated with reliable corrosion protection, otherwise rust can spread unseen.

With Naviton 2-K adhesion agents, however, various backgrounds can also be professionally prepared.

Wood, most plastics, also difficult materials such as rubber can be treated with special Naviton adhesion agents.

Brush, roller or spraying device - any processing is possible.

Cleanability



Cleanability

Surfaces coated with Naviton perform an excellent cleanability.

Some time ago the "self-cleaning effect", or "lotus effect", was associated with the advantages of the nano-industry. However, a mechanically robust and durable solution could not be achieved.

Naviton takes a very different way.

Our macromolecules harden and form a construction that makes it difficult for other molecules and compositions to crosslink with Naviton. In fact, these areas are permanently less dirty.

Simple cleaning with water, high pressure gun, simple surfactant or special cleaning agents are also possible.

Naviton-Metallic coating on vehicle rim in test: After 9000 km rough track and road, very little dirt and brake dust sticks to the surface. The rim was cleaned in a few seconds with sponge and cold water.

Surfaces and processing



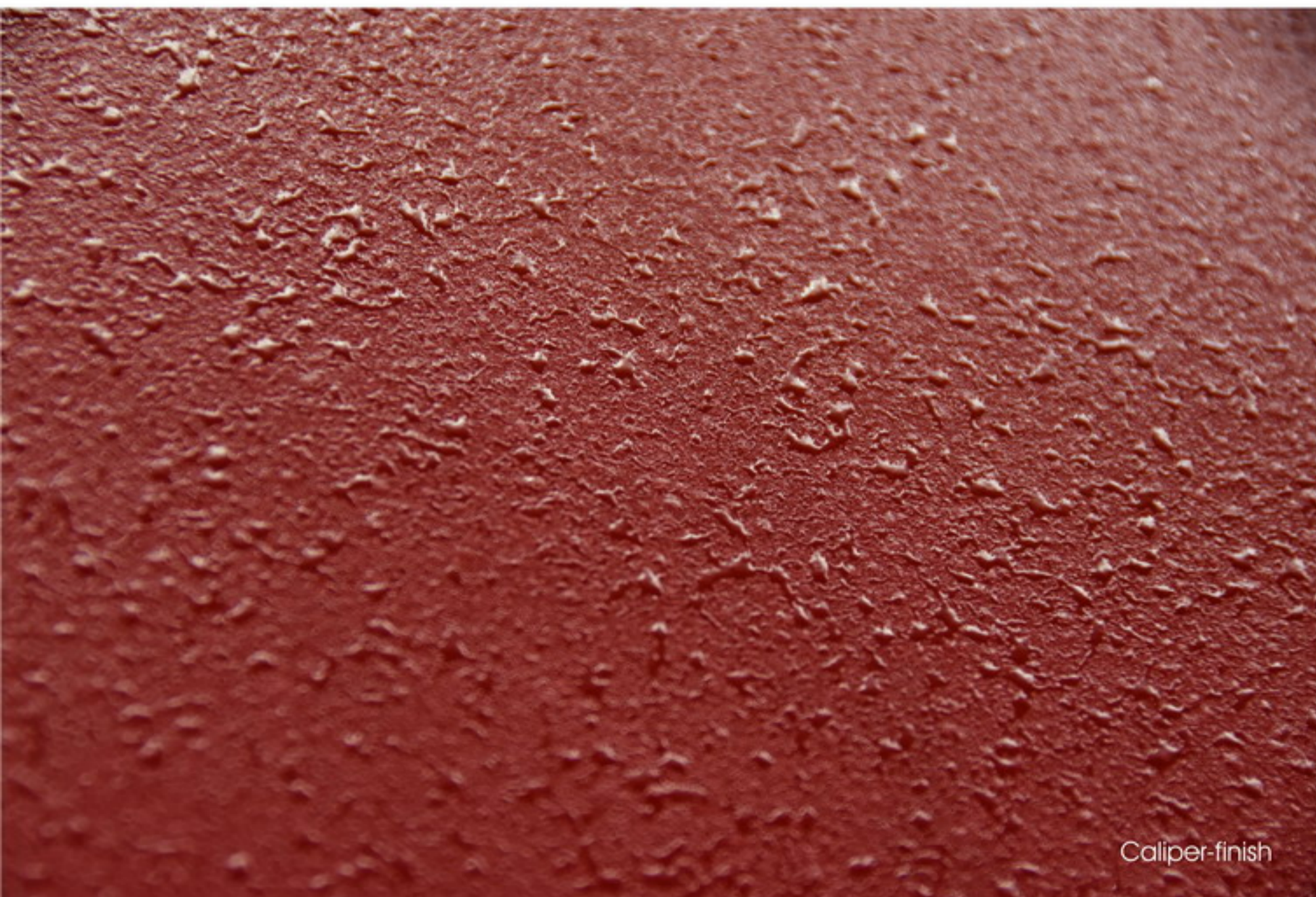
spray painted surface



Rolled surface



rolled and spray painted surfaces



Caliper-finish

Surfaces and processing

Naviton can be processed according to your needs and equipment.

Naviton can be applied easily and with good results using a brush or roller. The color surface hardens into a smooth, satin-gloss film, which presents both: Nice optical appearance and a reliable protection.

Depending on the equipment, color spraying systems can be used to produce even more even coatings.

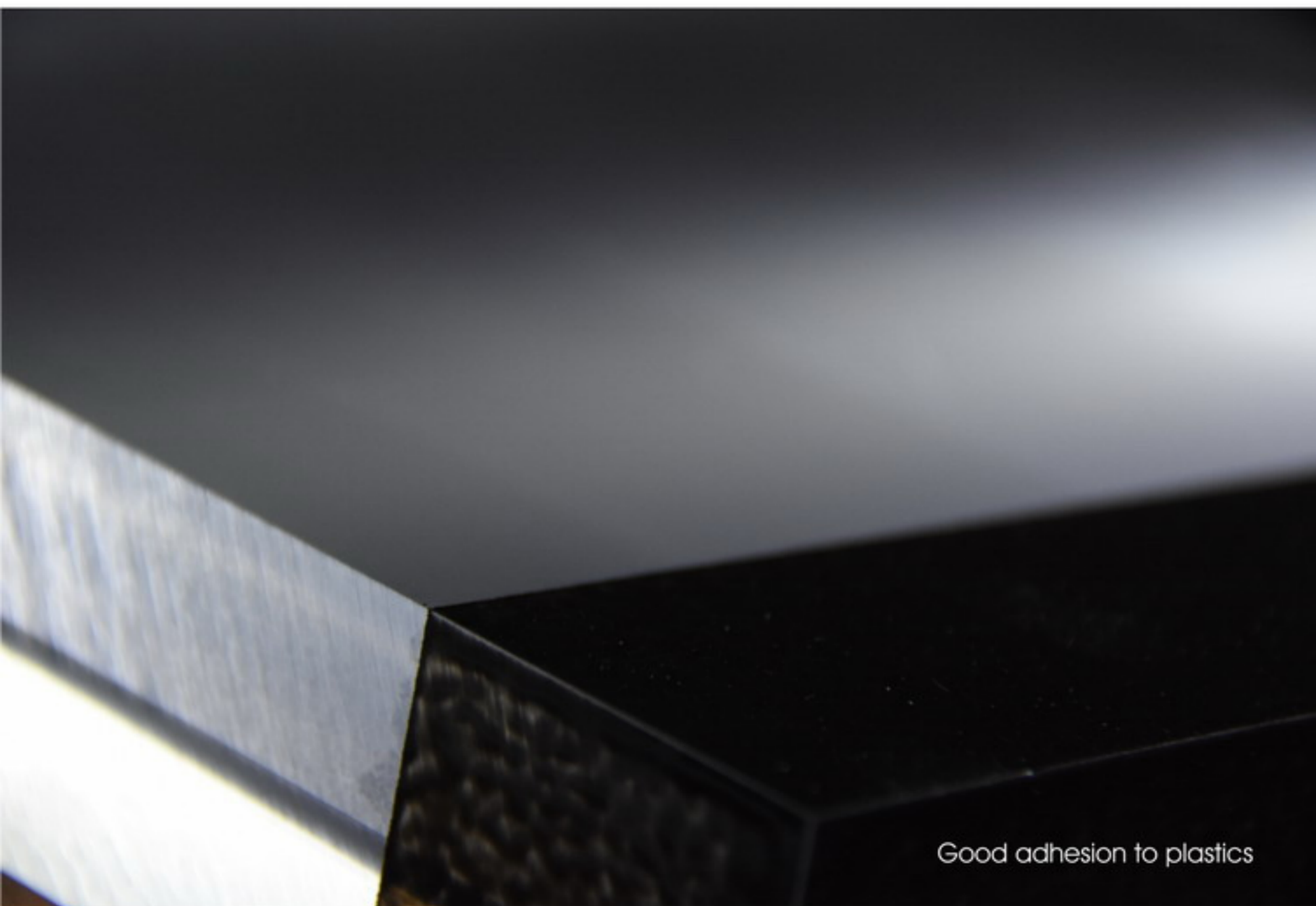
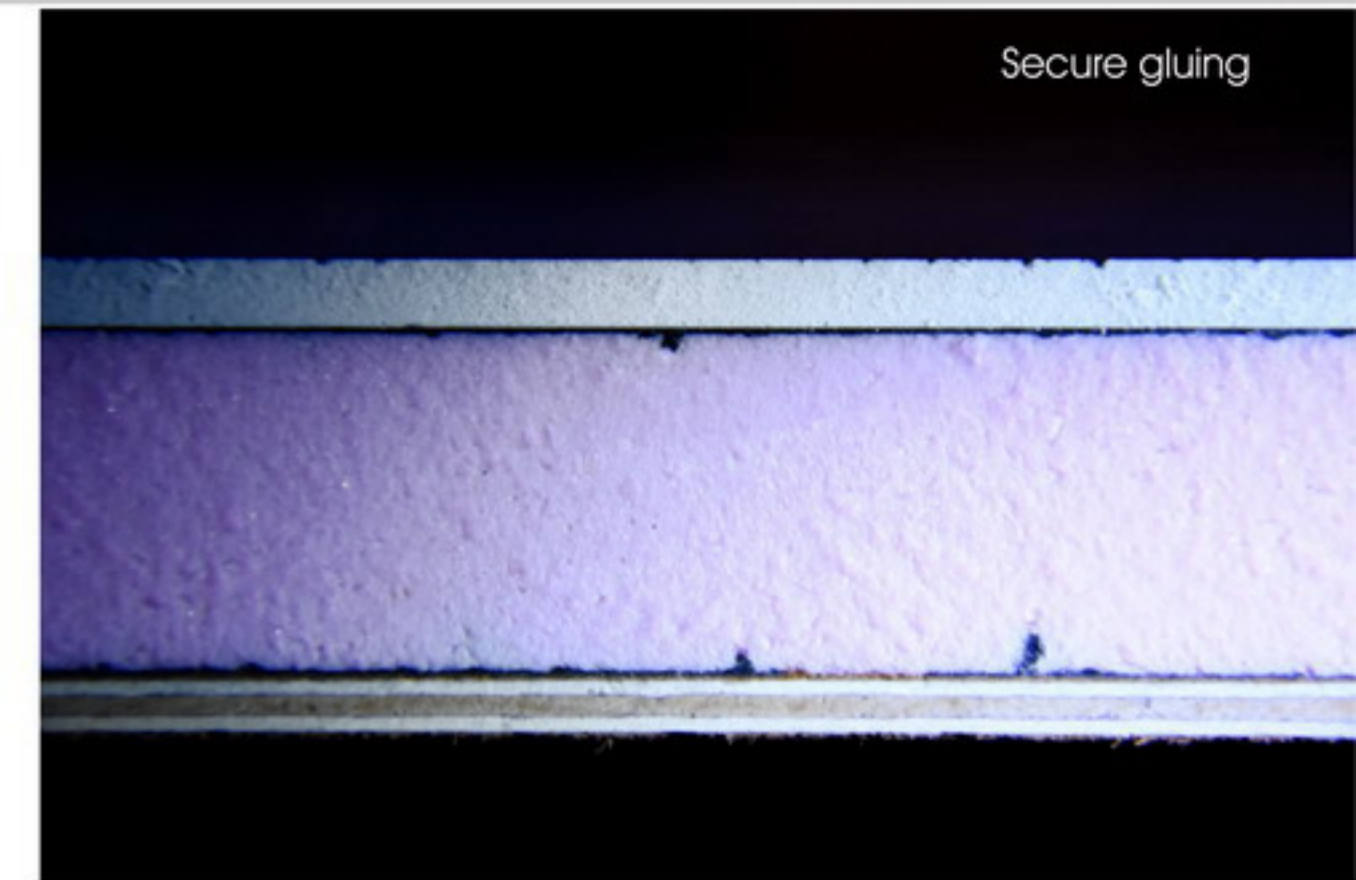
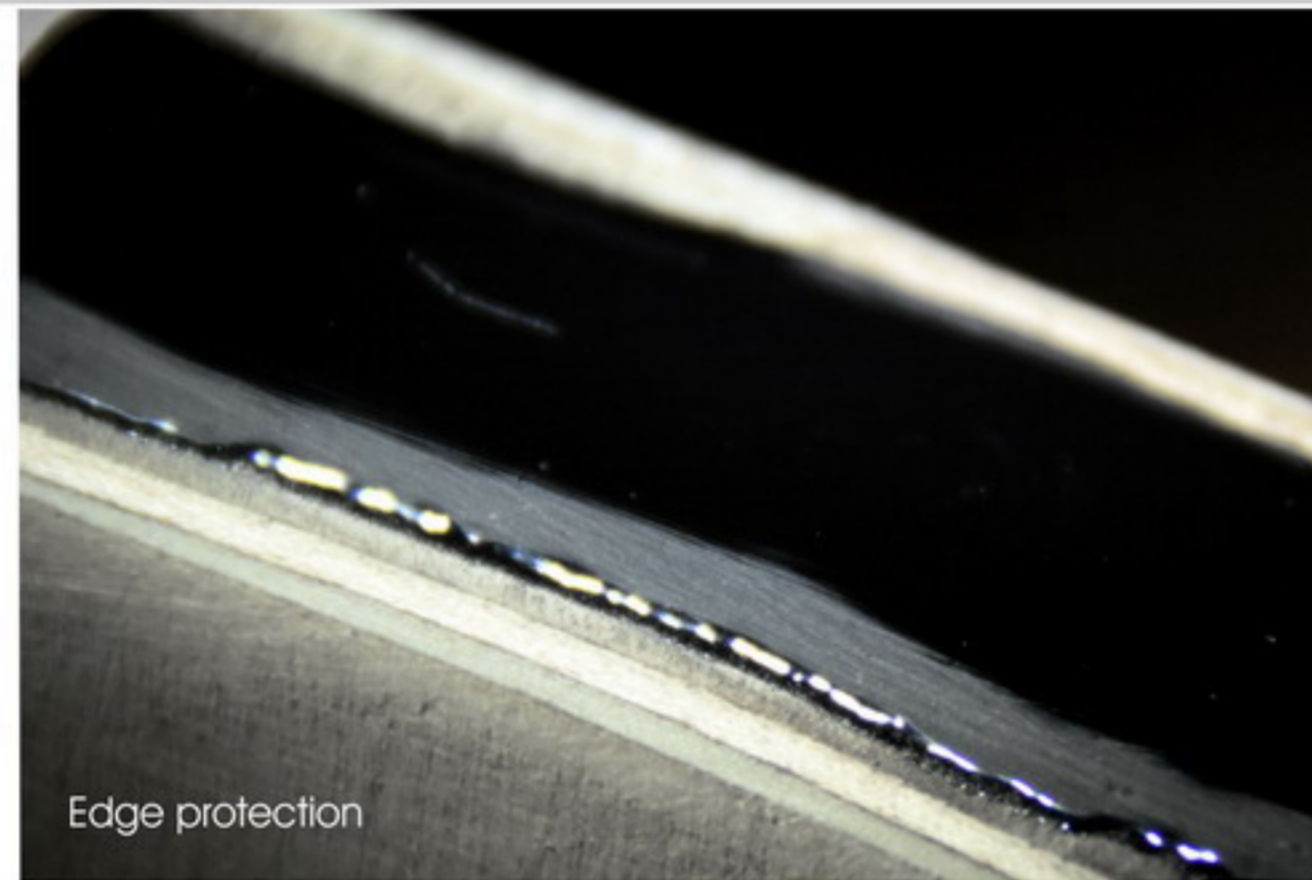
The pot life of the 2-K system gives you plenty of time for your freedom of design.

In the case of multi-layer varnishes, Naviton can be applied wet in wet without any intermediate sanding. The finished surface gets a durable satin gloss during the hardening process.

Oven treatment is not necessary with Naviton - room temperature is sufficient.

A specialty is our Caliper version (only by spraying). Here, fine structures are created that support the dirt-repellent properties, meet the toughest requirements and look just fantastic.

Versatility



Universal use

Naviton can be adapted to suit the application.

Whether opaque plastic coatings for the event industry or flexible thick-film systems with a shock-absorbing effect - this is where Naviton Flex is used.

This Naviton Hybrid combines excellent adhesion on a wide range of substrates with a high degree of flexibility.

The viscosity can be adjusted according to the application.

Thus, e.g. long-lasting sealing compounds, which also cure under air seal.

Thanks to the special 3-K formulation even pasty and moldable viscosities can be adjusted on site.

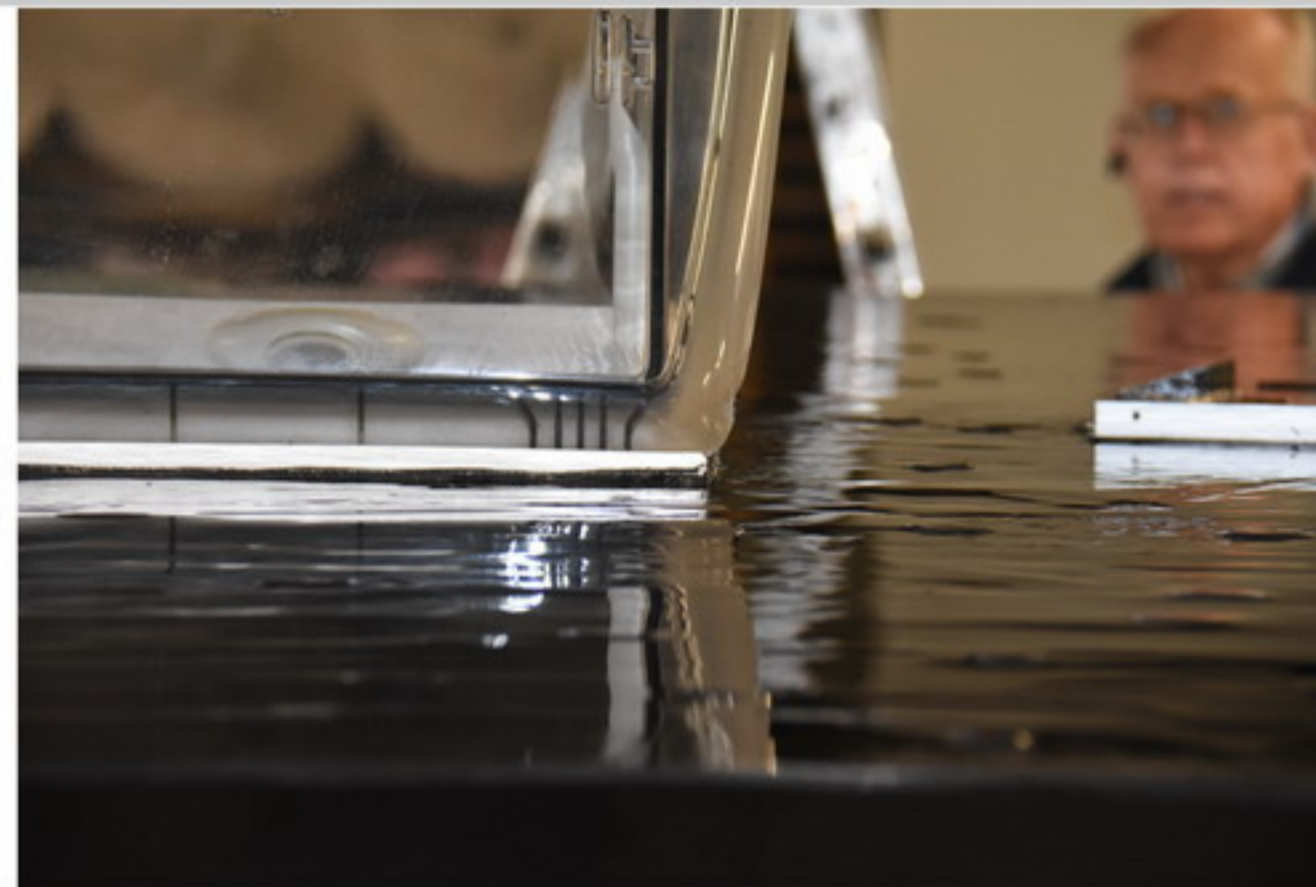
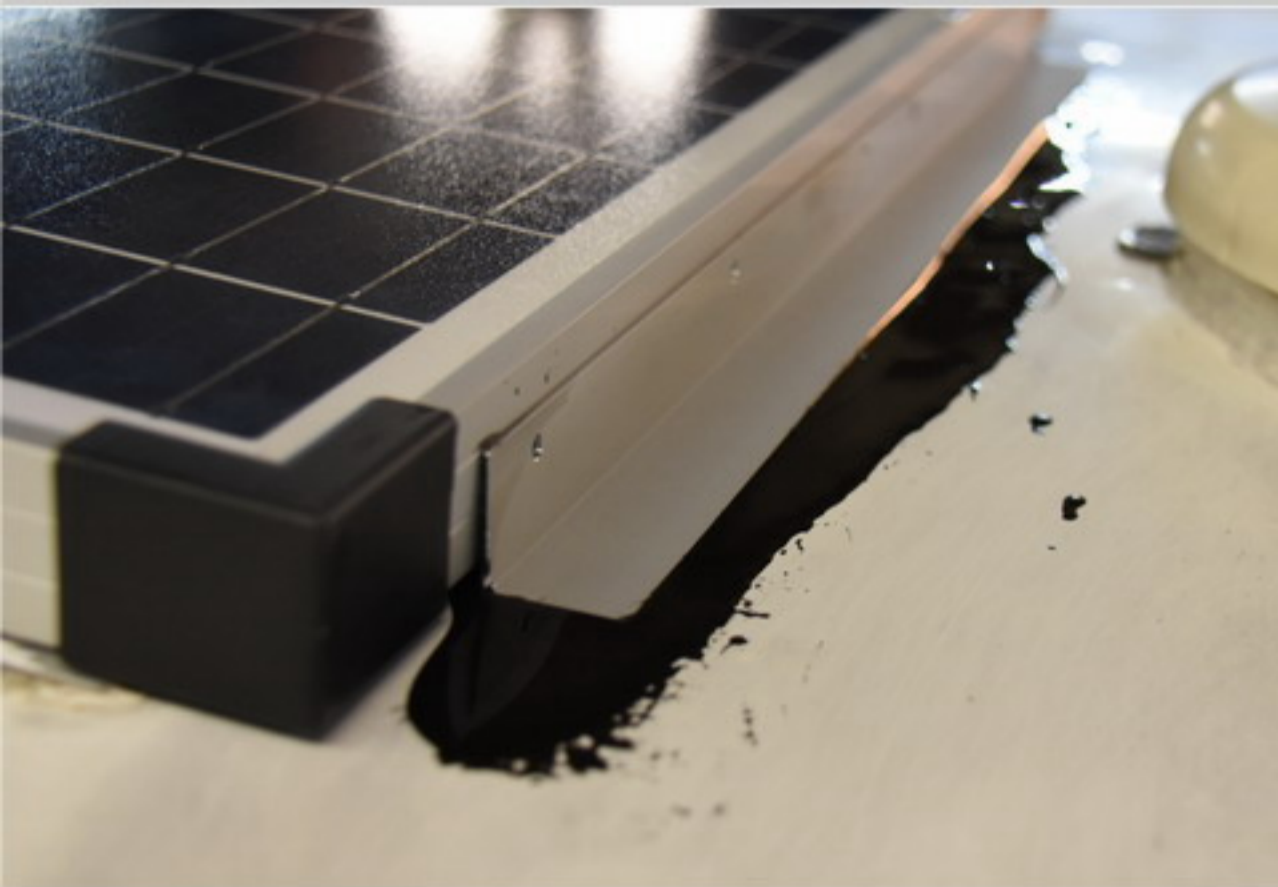
The high setting strength also allows the surface to be embossed with matrices.

Naviton Flex can be sanded.

Thanks to the very good adhesion properties of Naviton Flex, combined with high internal strength, it can be used as a safe and uncomplicated adhesive.

This makes it possible to glue different materials even under airtight closure.

Remains can be removed with a knife.



Project „Caravan“

After a hail and storm damage a solution had to be found to repair and maintain the water resistance.

Amongst others, Naviton Flex was used here.

The material hardens permanently elastic and thereby closes with high adhesion all leaks reliably.

The liability is so strong that parts such as the solar cells were also glued with it.

Naviton Flex can be easily applied to the cleaned and sanded surface with a roller.

Black in the base color, it can be overcoated after hardening in other Naviton colors.

Since the Naviton-Flex coating can absorb kinetic energy with the appropriate layer thickness, the caravan is best equipped for later hailstorm attacks.

Body colour used for roof and hatch:
RAL 7032 pebble grey

Application examples



Project „Residential box“

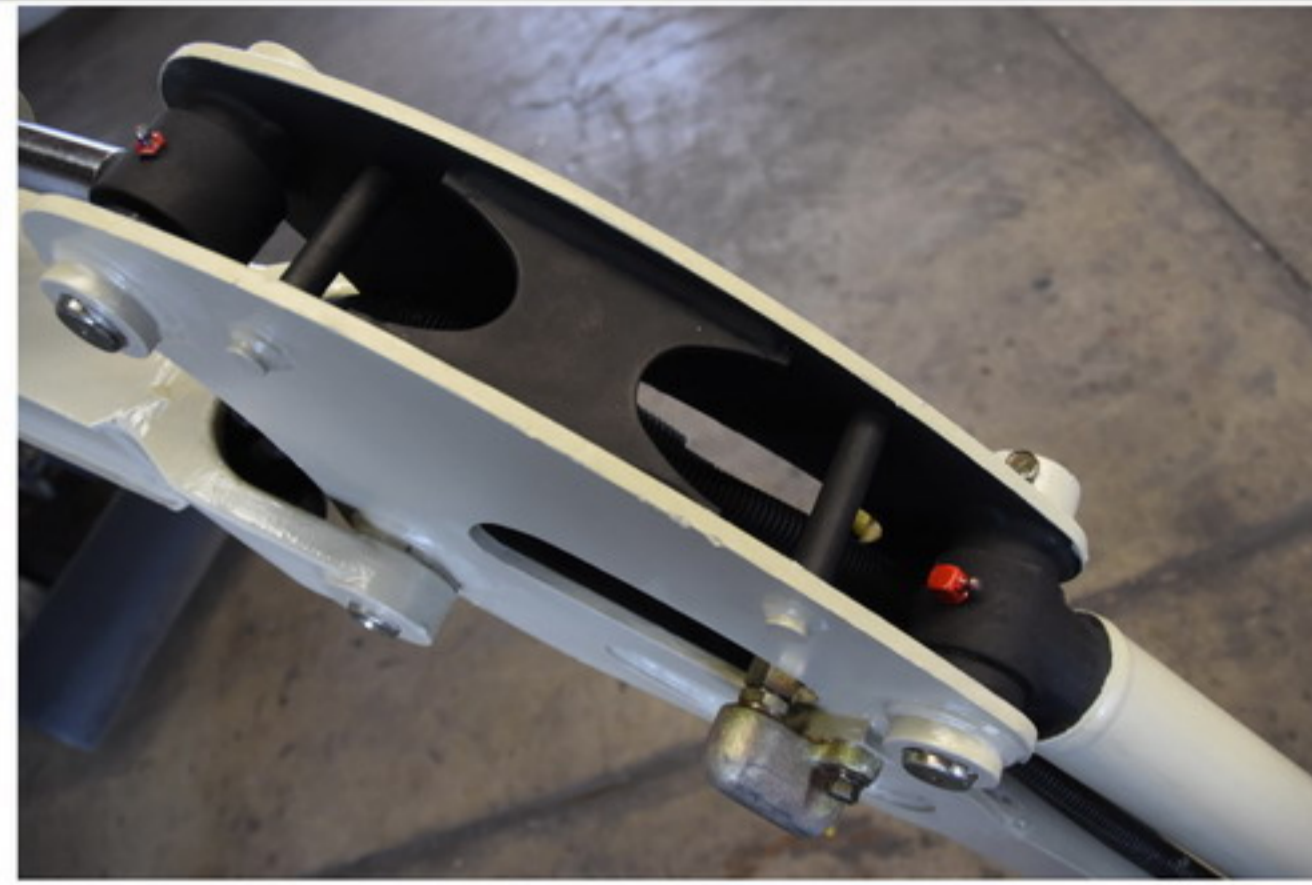
Individual trailers made of textured coated board.

This trailer was refined by a graffiti artist and thus got its unique appearance.

Thanks to the Naviton coating, the work of art is not only protected against exposure to sunlight, but also for stress on small and large excursions. The transparent additional

protection coating made of Naviton pure makes the finish shine for a long time. Soiling is easy to remove with a water hose.

Application examples



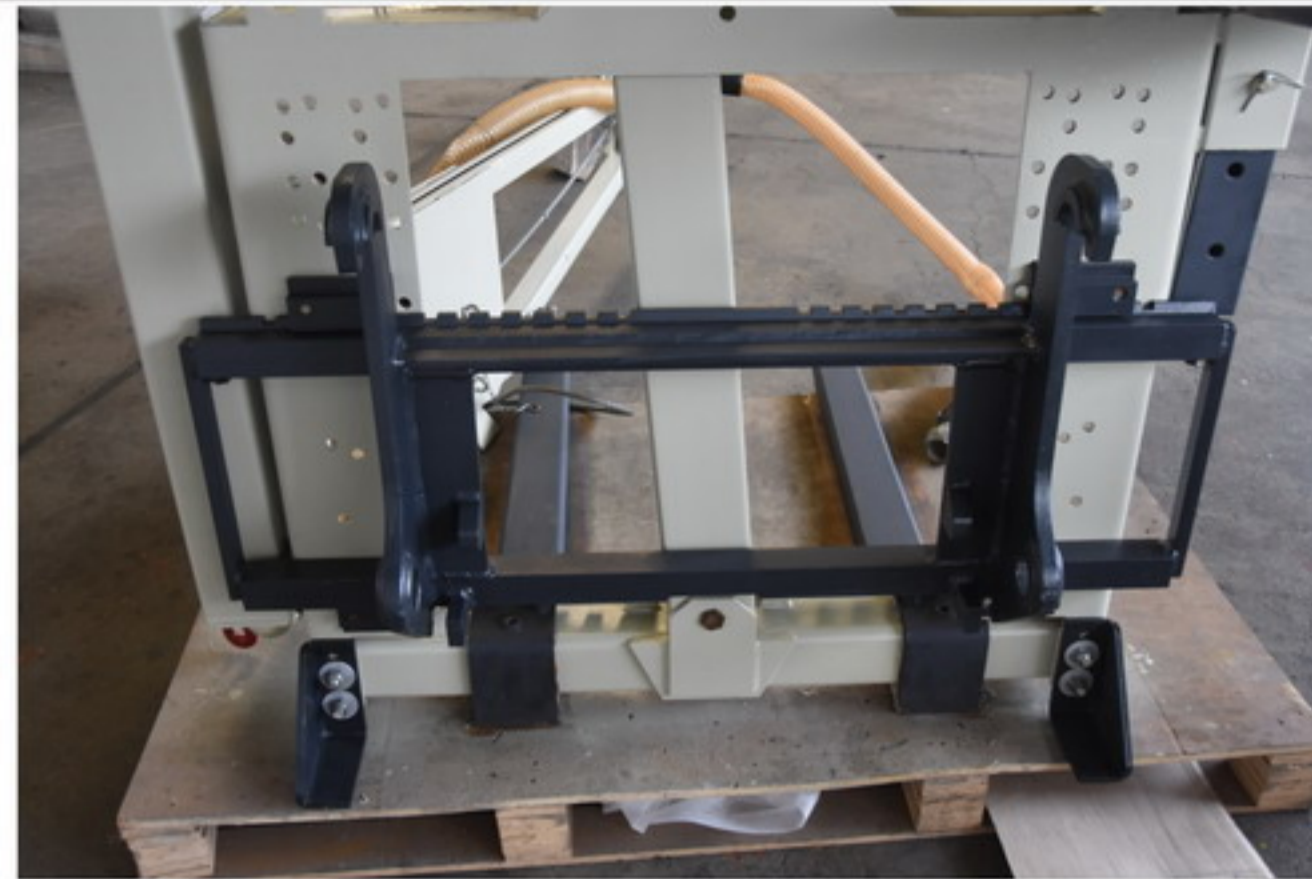
Project „Excavators“

Several excavators were used for refurbishment. Large-area corrosion had to be overcome.

The Naviton coating was applied to metal and plastic. It was worked with brush, roller and spraying technique.

Thanks to the Naviton coating, the construction site equipment now looks almost as new, got an individual appearance and are ideally equipped for rough construction site use.

Application examples



Project „Curb positioner“

This curb positioner is brought to its respective location with the help of an excavator. This construction site equipment was a complete overhaul.

The Naviton coating was applied in various RAL shades. It was worked with brush, roller and spraying technique.

Thanks to the Naviton coating, rust will play a minor role for the future.



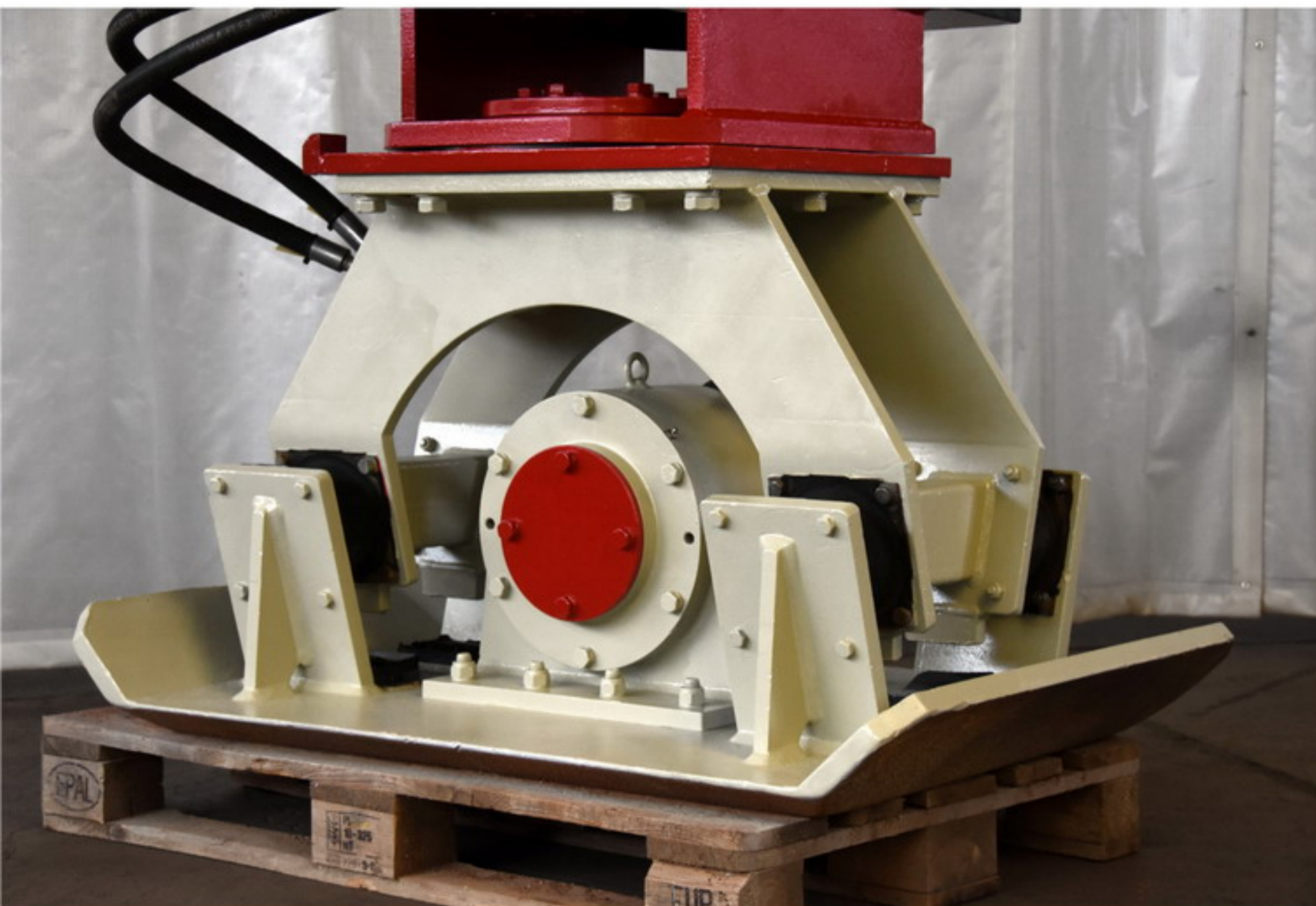
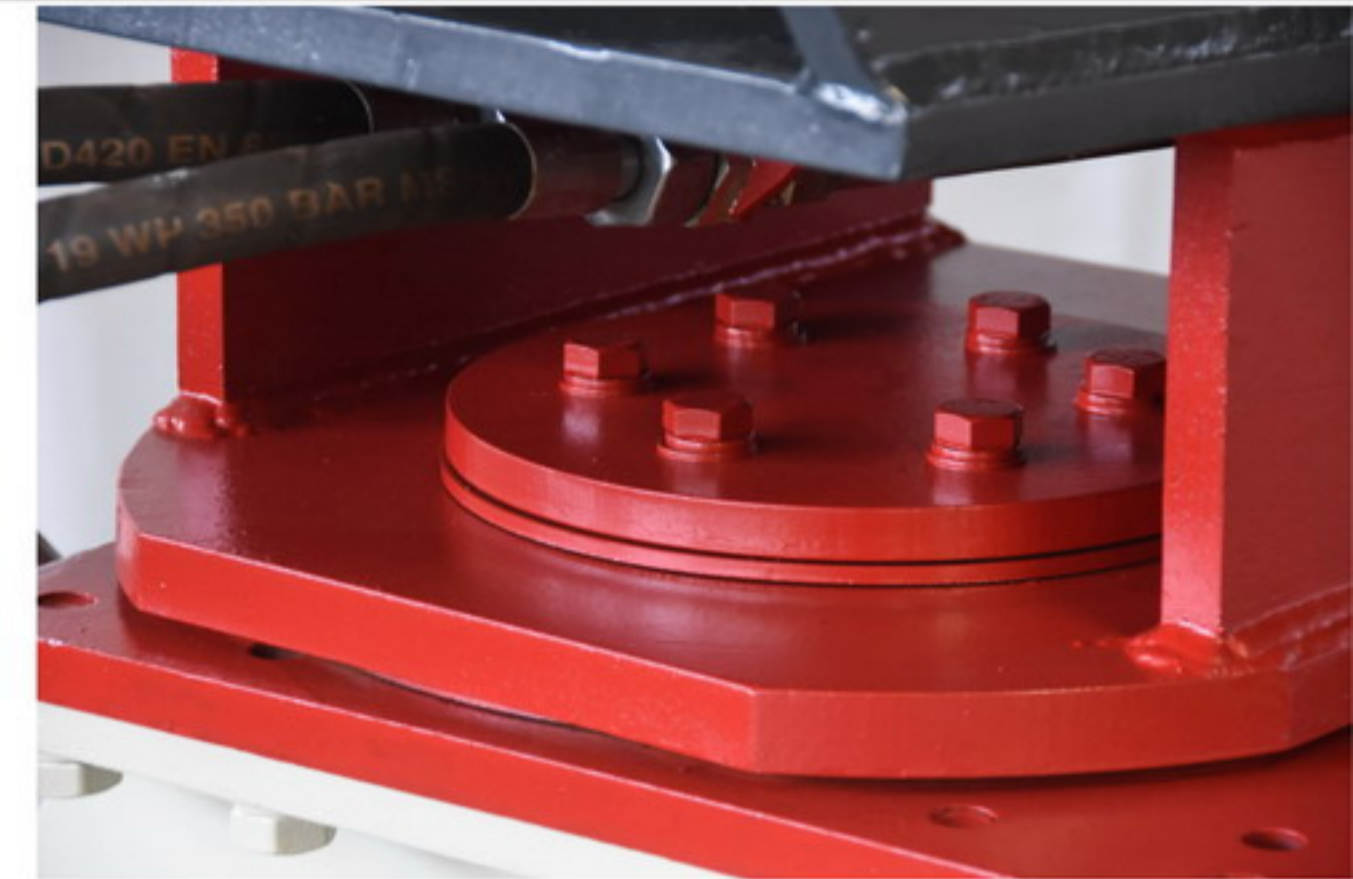
Project „Steamroller“

This roller was newly coated.
Substrate: Steel and GRP

The Naviton coating was
applied in various RAL shades.

It was worked with
brush, roller and
spraying system with
Caliper technology.

Application examples



Project „Hydraulic vibrating compressor“

These massive steel machines were a major overhaul. Large rust had spread.

The Naviton coating was applied in various RAL shades.

It was worked with brush, roller and spraying technique.

Application examples



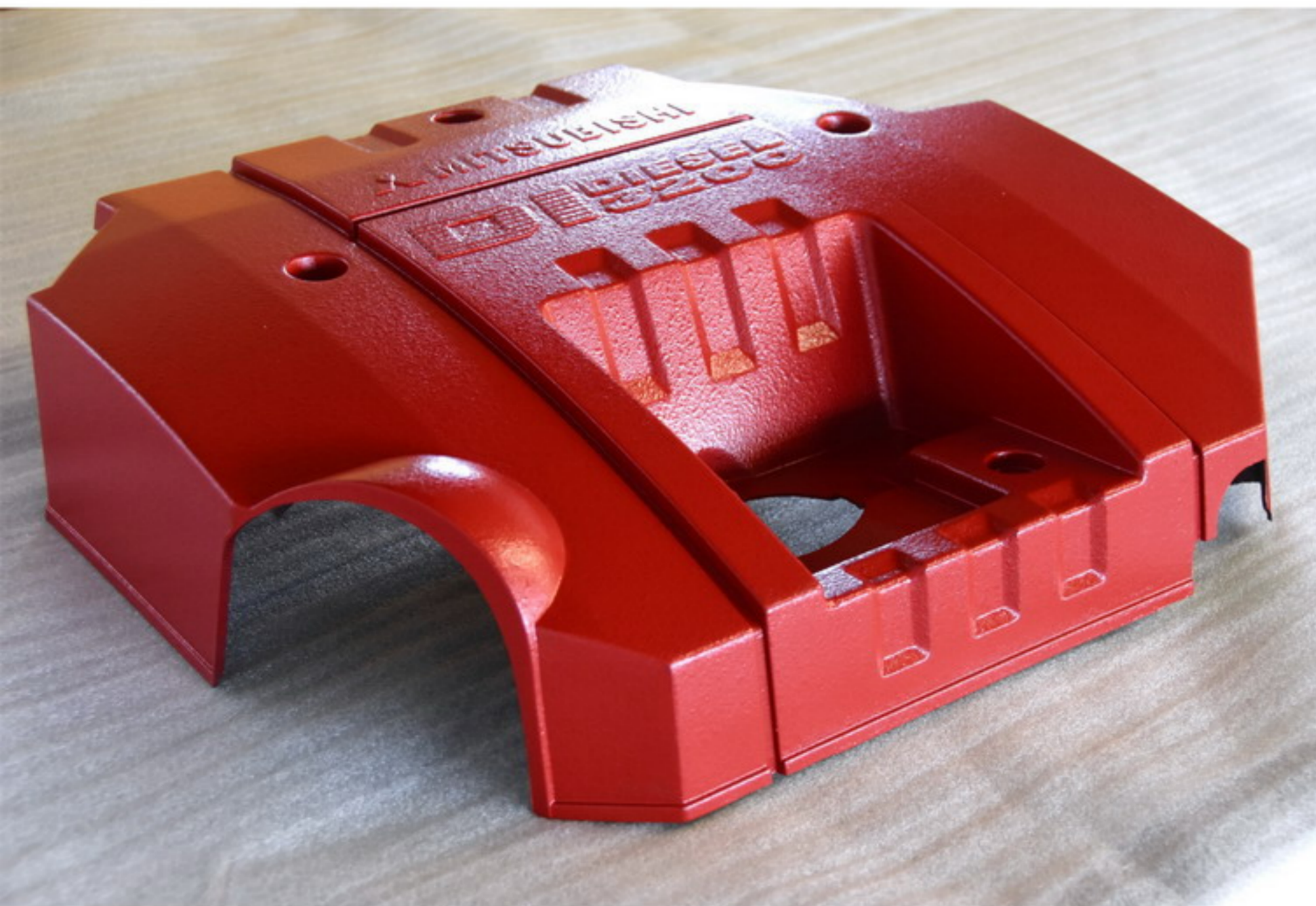
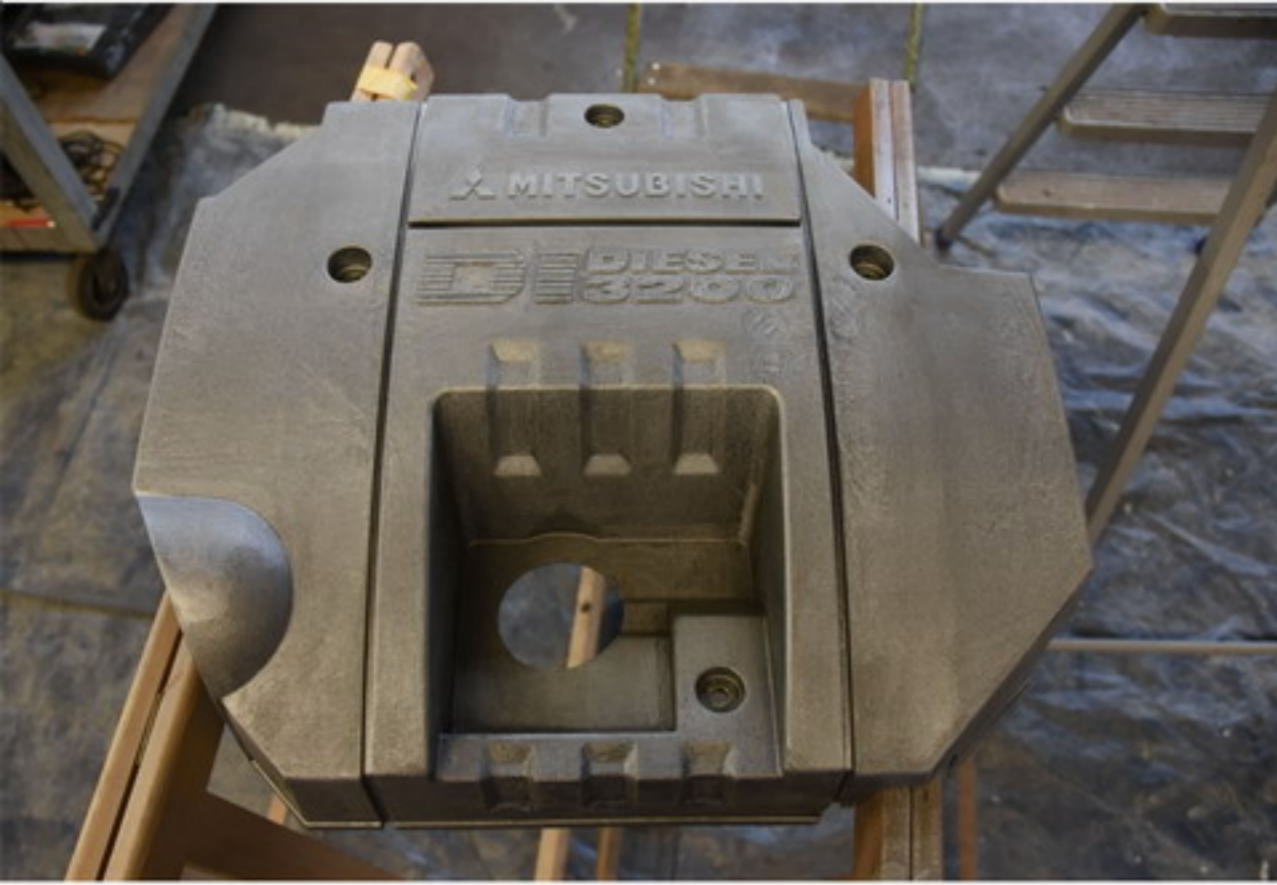
Project „Off-road vehicle“

This off-road vehicle has been completely redesigned from scratch. Naviton was used at the chassis, in the interior as well as in the outdoor area.

The Naviton coating in color "RAL 1002 sand yellow" was spray painted, as well as the attachments such as fender extensions or exterior mirrors made of plastic, as well as the entire interior including furniture. Here, pigmented Naviton coating was used as well as transparent Naviton pure (for the table top).

The floor area was coated with a roller, all other surfaces with an HVLP spraying unit.

Application examples



Project „Engine cover“

This engine cover is made of plastic, which was equipped with Naviton metal-activ plastic primer before the top coat.

The Naviton coating was carried out according to requested RAL - color in broad Caliper technology.

All paint layers were spray painted.

Application examples



Project „All terrain vehicle“

At this ATV, a partial coating was performed. The coating was carried out with Naviton in shade RAL 6011 - reseda green.

All other parts were left in factory condition. The ATV is used regularly in the trial. You can see impressively the new coating, which is less dirty and very easy to clean if necessary.

All paint layers were spray painted.

Application examples



Project „Thunder - expedition vehicle“

This mighty expedition vehicle came back by land after a 105,000 km Africa tour from Namibia. With great attention to detail, the truck has been completely redesigned before being shipped to South America. There he is the basis for another expedition lasting several years.

The vehicle was elaborately examined and then the coating plan with Naviton was created.

In addition to a pure-white topcoat coating, designed for optimally reflecting heat radiation, accents with the Naviton Metallic coating color DB 702 as well as RAL 3004 were set.

The steel rims and lamp guards were sprayed in five layers, all other bodywork, cabins and attachments were rolled.

Application examples



Photo courtesy of Gootravel.com



Photo: © Gootravel.com

Projekt „MAN KAT 1 - expedition vehicle“

Originally developed as a military truck, this vehicle has now been converted to a civilian expedition mobile.

The vehicle has an extremely torsion-resistant lead frame and an air-cooled Deutz V8 engine.

The wading depth is 1200 mm.

There is plenty of room for a quad in front of the cabin.

As a reminiscence of civil vehicles of these years, a typical 70-year-old color was chosen, which is hard to beat in terms of conspicuity.

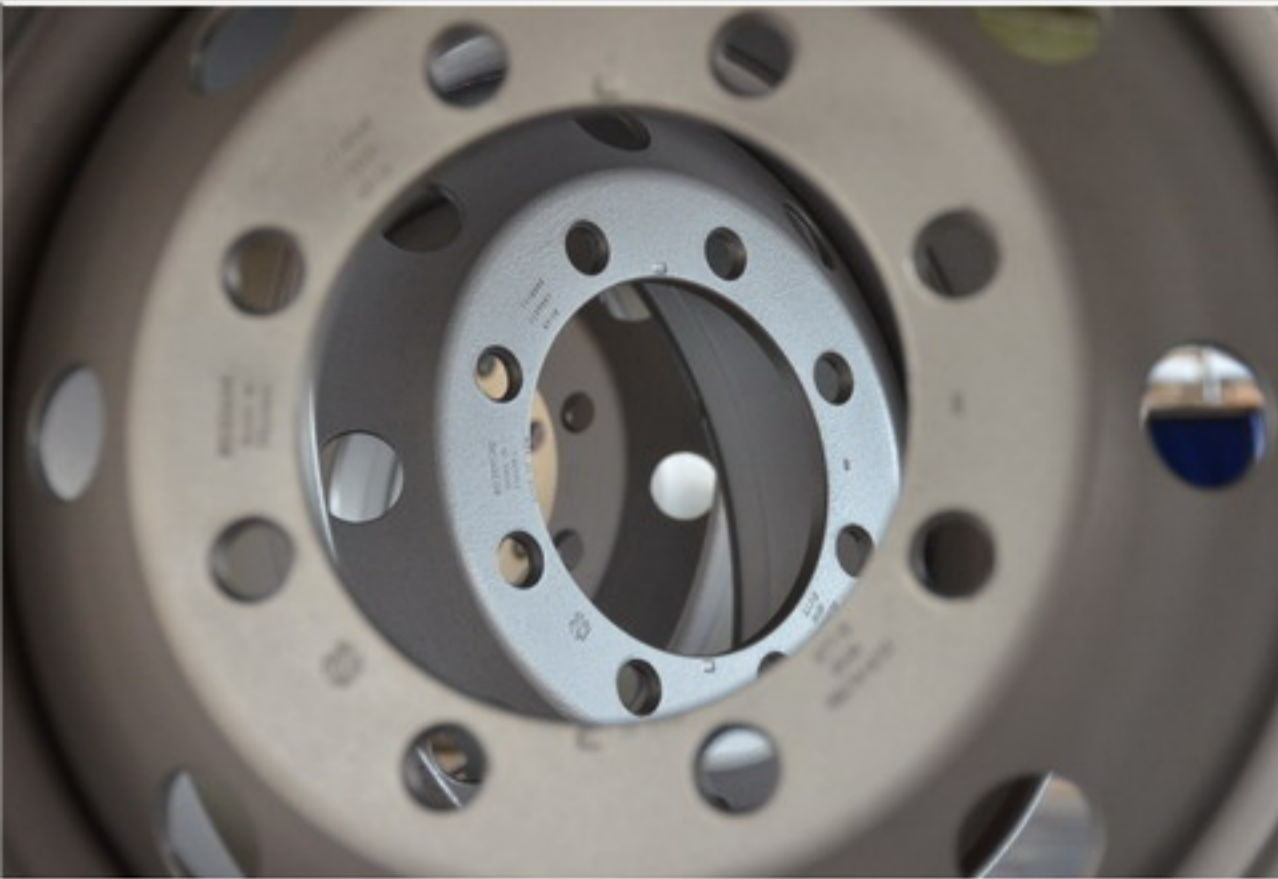
The vehicle is also on the road as advertising ambassador for the company Gootravel and already impresses with its mere appearance.

Body and cabin were sprayed, the frame and attachments rolled.

Colour shades:

RAL 6018 yellow green with Caliper surface

RAL 9011 graphite black in silky matt appearance



Project „Truck - rims “

Rims and tires are the shoes of the vehicle. If a four-wheel truck goes into the terrain, sand or stone tracks, the chaff separates from the wheat. Here, good rims are indispensable. The factory-supplied rim paintwork was reinforced with the Naviton protection system at customer's request.

This is where Naviton Metallic / shade DB 702 with iron mica was used. In addition to the impact-resistant coating, the owner also has another tangible advantage: Stubborn and stuck dirtying of wheel rims have been a thing of the past.

The steel rims were sprayed in five layers.



Project „motor car - rims “

For aluminum rims shown in the photo, a special pretreatment is required to achieve a lasting result.

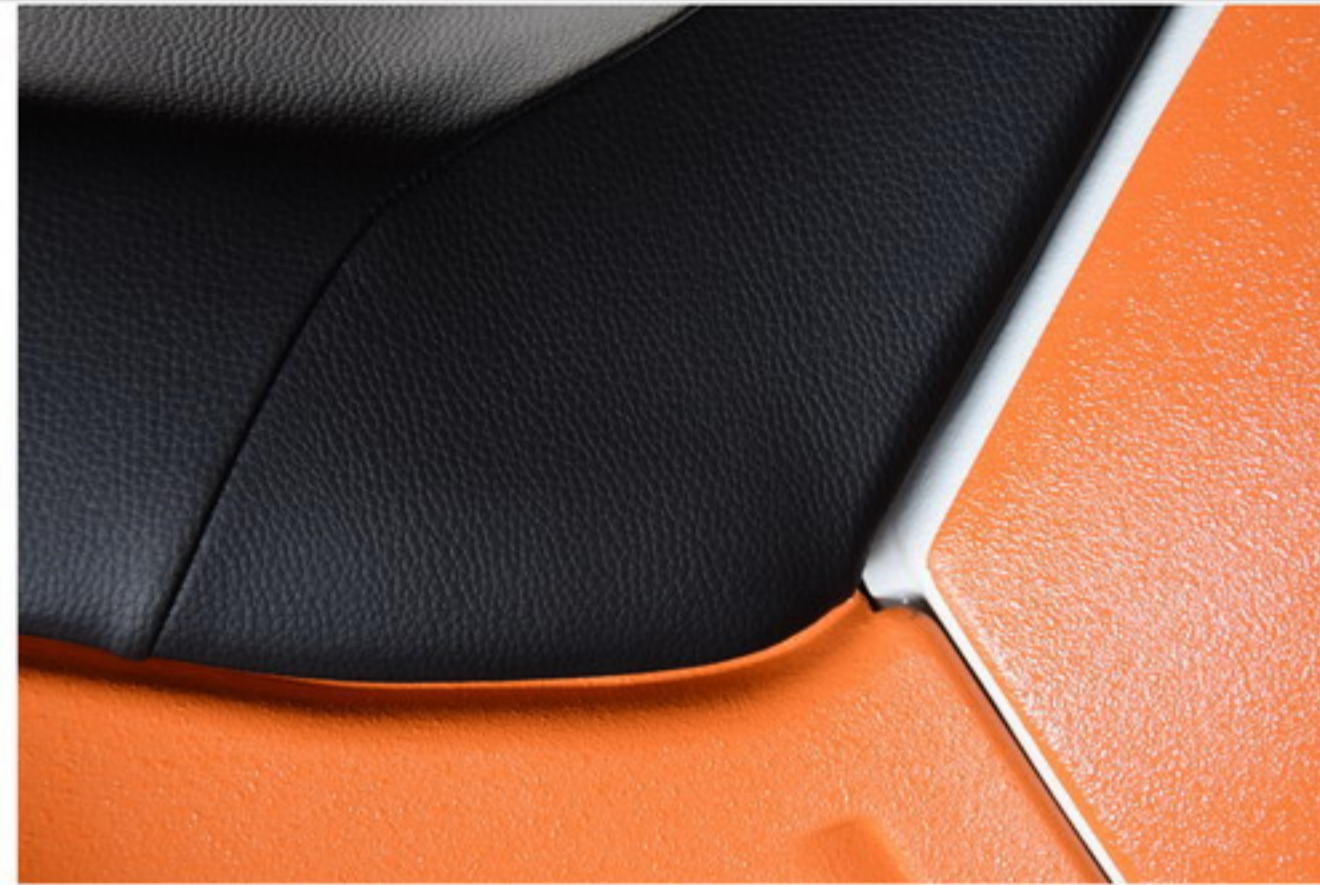
The Naviton metallic paint system can be applied very evenly and in veritable layer thickness. Also available in high-gloss finish on request.

With the catalytic pre-priming Naviton-Alu-Spec a very strong bond of the following layers succeeds.

Here Naviton Metallic / Color DB 702 iron mica with additional Naviton Pure (transparent) coating was used.

Indistinguishable from normal rim coating, persistent and insoluble rim contamination has since become a thing of the past.

The majority of contaminations can be removed very easy and within short time.



Project „motorcycle“

This Yamaha Ténéré, 2001 model should be upgraded visually and at the same time better visible in traffic.

The motorcycle was disassembled and coated in replacement of the formerly black and violet original colors by Naviton coatings.

The detection potential is increased by the rich Naviton coating.

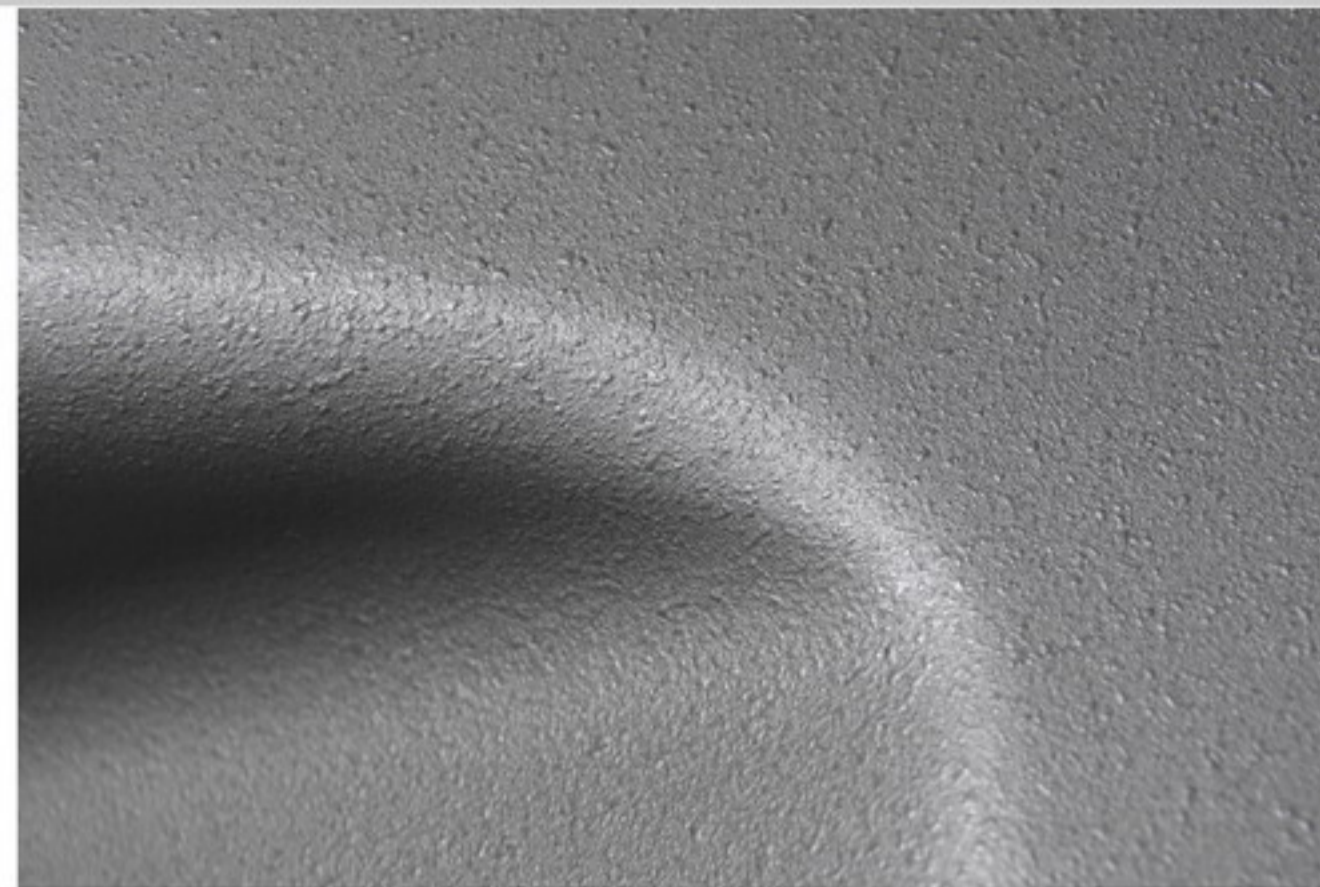
The protection of the motorcycle by external influences is increased tremendously by the impact-resistant Naviton coating.

Thanks to the dirt-repellent Naviton coating, the machine is less polluting and much easier to clean when returning from off-road use.

For the side panels, Naviton Metallic was chosen in the shade of iron gray, it blends perfectly with the existing engine and baffle materials.

Other selected colors:
RAL 9003 signal white
RAL 9011 graphite black
RAL 2011 deep orange

Finish: Caliper.



Project „camper shell“

The construction of the sleeper cab from Cramer - Technik itself is designed for difficult and usually equipment destroying multidisciplinary terrain. Now also the external structure has been optimized:

The cabin was equipped with a multi-layer naviton protective coating.

The application was carefully prepared for later use in demanding areas:

Naviton cures safely under exclusion of air. It is thus possible to apply multi-layer reinforcing layers in a short time. At the neuralgic sites where e.g. branches etc. like to maltreat the surface, were put up to eight layers.

Colour Naviton Metallic in shade „Iron grey“ was selected for the cabin.

Finish: Caliper.



Project „Land Rover Series II, LWB“

This Land Rover, 1971 model, should be returned in color in the former delivery color "Deep Bronze Green".

This color could be replicated very authentic in Naviton quality.

The vehicle is used as a brand ambassador for the off-road and travel magazine "Matsch & Piste".

The vehicle has been largely dismantled, slight deformation of the outer skin were purposely still remained visible.

The existing paint was sanded and prepared with Naviton Bridge, a deepening bonding agent.

It was followed by five layers of "Deep Bronze Green" and an additional, in the original color matched end seal.

Thus, the vehicle is optimally prepared for future tasks.

Coloring for bumper and attachments: Naviton graphite black

Finish: Caliper.

An artist designed an old fashion door lettering with Naviton in RAL 1015 light ivory and RAL 3011 brown red

Application examples



Project „For-wheel-drive-bus“

The aim of this refurbishing project was to provide the best possible protective coating to the all-wheel bus. The car is often on rough terrain. It is used for personal and equipment transport. In the end, he must also fulfill representative tasks and thus simply looks good.

Here, Naviton RAL 6011 reseda-green was used together with anthracite black matching existing plastic parts. Best possible stone impact protection should be achieved. The last layers were executed in Caliper technique. Silky-iridescent, completely dirt-repellent and mechanically highly resistant, this Naviton coating fulfills its service.

The body of this 4x4 vehicle have been treated in six-layers, the plastic parts were sprayed with seven layers. Since the Naviton system does not need any intermediate sanding, the time expenditure is comparatively low.

Everything has its price



But quality is paying off.

Look very closely: Especially for service vehicles, four wheel drive and expedition vehicles other things count - not only the beautiful appearance. We have a very own definition of premium quality: A conclusive overall impression at first, a very good appearance on the second and a particular longevity on the third glance.

You should not be satisfied with less.

Quality pays off.

Our well-trained team is committed every day to convince you with the quality of our performance and the intelligence therewith of the solutions.

We guarantee a precise material composition as well as a timely delivery and support you thereby for a perfect execution quality.

Insist on quality - also with regard to the value of your project so that you are satisfied in the long term.

Naviton special coatings
Nortech GmbH
Ziegeleiweg 44
D-31832 Springe
Germany

Tel. +49 - 5041 98 90 37
Fax. +49 - 5041 98 90 38
info@naviton.eu

www.naviton.eu

Photos: © Naviton



Redefining the limits

NAVITON

special coatings - powered by Nortech GmbH